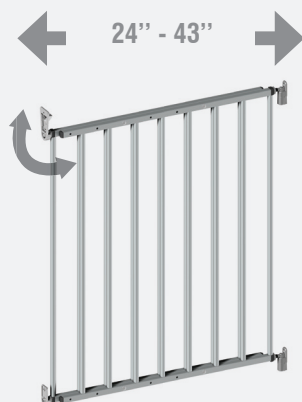


OGGI SG-16 HARDWARE MOUNTED GATE



Please read the following instructions carefully.
Keep this instruction manual for future reference.
Tools required: Wrench (included).

⚠ WARNING:

Keep small parts away from children.
Adult assembly required.
Intended for use with children from 6 months through 24 months.

INSTRUCTION MANUAL

Thank you for purchasing this Safety Gate from Oggi.
This gate will help you create and maintain a secure environment for your child (or pets).

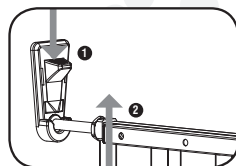
⚠ WARNING: IMPORTANT! KEEP FOR FUTURE REFERENCE!

WARNING: To prevent serious injury or death, securely install gate and use according to manufacturer's instructions.

WARNING: Never use with a child able to climb over or dislodge/open the gate.

WARNING: Never leave child unattended.

- Do not use if any components are missing or damaged.
- Always close and lock gate behind you.
- Do not use if any components are missing or damaged.
- Intended for use with children from 6 months through 24 months.
- This product will not necessarily prevent all accidents. Proper adult supervision is required at all times.
- Adult assembly required. Exercise care when unpacking and assembling product.

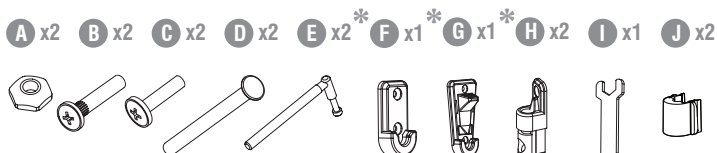


Oggi . 360 Stewart Road – Wilkes-Barre, PA 18706

OGGI SG-16

HARDWARE MOUNTED GATE

FEATURE & COMPONENTS



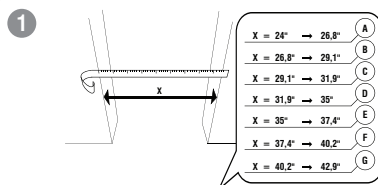
* screws not provided

SET-UP

This gate is suitable for openings between 24" and 43" wide.

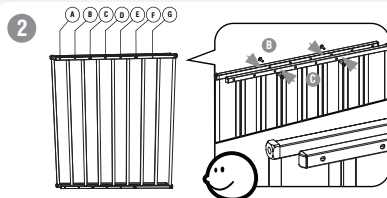
Step 1

Measure the width of the opening you wish to place the gate in. Adjust the two gate sections to one of the five numbered positions (A-G), according to the size of the opening you intend to fit the gate in.



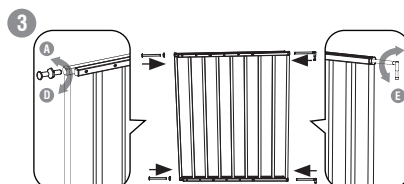
Step 2

Align the holes on both gate sections. Secure the gate by fastening 2 'B' screws into 2 'C' screws on the top of the gate and 2 'B' screws into 2 'C' screws on the bottom of the gate. Do not attempt to fasten the gate using only one screw.



Step 3

Screw the wall-cup screws 'D' and the nuts 'A' into one side of the gate. Screw both hinge-bars 'E' into the other side of the gate.



Step 4

Mark the position for the wall-cups 'G' and 'F' on the opposite wall surface to where you want the gate to hinge from. The top

IMPORTANT ! KEEP FOR FUTURE REFERENCE

hole for the lower wall-cup 'F' should be 3,8" from the floor. The top hole for the upper wall-cup should be 'G' 31,1" from the floor. Mark the position for the hinges 'H' on the wall surface you want the gate to hinge from. The top hole for the lower hinge should be 3" from the floor. The top hole for the upper hinge should be 29,2" from the floor. Fix the wall-cups and the hinges using the appropriate fixings depending on the surface available: wood screws for wooden surfaces, multi-use dowel and concrete screws for concrete surfaces, metal screws for metal surfaces. These screws are not provided.

Step 5

Place the gate into position, making sure to insert both of the hinge bars 'D' into the hinges 'H'. Adjust the wall-cup screws 'D' so that they fit comfortably into the wall-cups.

Step 6

Ensure that the distance between the gate and the wall on the latch side is no less than 0,7" and no more than 2,4", and the distance between the gate and the wall on the hinge side is no less than 1,3" and no more than 2,4".

Step 7

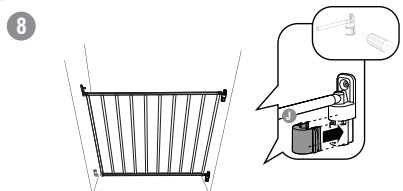
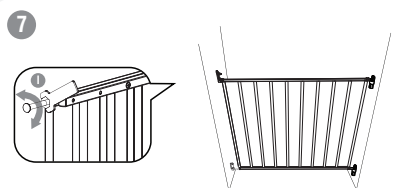
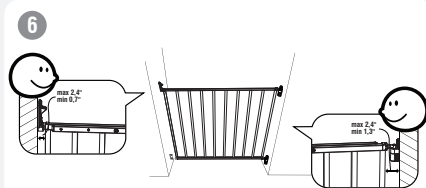
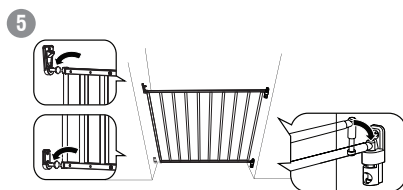
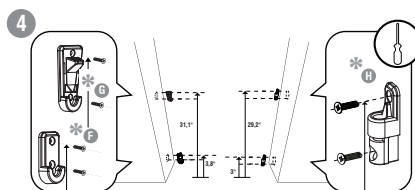
Use the spanner 'I' to tighten the nuts 'A'.

Step 8

Place the hinge-covers 'J' on the hinges 'H'. These can later be removed using a screwdriver.

Step 9

To open the gate, push the latch (1) and lift the gate (2). The gate should open in both directions.



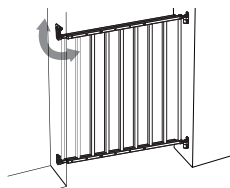
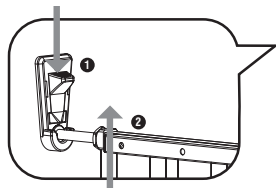
MAINTENANCE:

1. Regularly check gate, tension bolts and pads to make sure the gate is securely in place.
2. Do not use the gate if any components are damaged or missing.

To Clean:

Wipe surface with a damp cloth or sponge to clean.

9



©2011 Oggi

Please retain for future reference.
Colors and styles may vary.
Made in Vietnam.