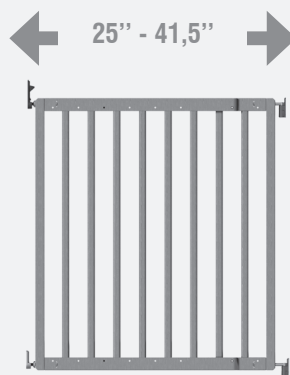


# OGGI SG-20

## HARDWARE MOUNTED GATE



Please read the following instructions carefully.  
Keep this instruction manual for future reference.  
Tools required: Wrench (included).

### **⚠ WARNING:**

Keep small parts away from children.  
Adult assembly required.  
Intended for use with children from 6 months through 24 months.

### **INSTRUCTION MANUAL**

Thank you for purchasing this Safety Gate from Oggi.  
This gate will help you create and maintain a secure environment for your child (or pets).

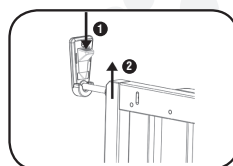
### **⚠ WARNING: IMPORTANT! KEEP FOR FUTURE REFERENCE!**

**WARNING:** To prevent serious injury or death, securely install gate and use according to manufacturer's instructions.

**WARNING:** Never use with a child able to climb over or dislodge/open the gate.

**WARNING:** Never leave child unattended.

- Do not use if any components are missing or damaged.
- Always close and lock gate behind you.
- Do not use if any components are missing or damaged.
- Intended for use with children from 6 months through 24 months.
- This product will not necessarily prevent all accidents. Proper adult supervision is required at all times.
- Adult assembly required. Exercise care when unpacking and assembling product.



Oggi . 360 Stewart Road - Wilkes-Barre, PA 18706

# OGGI SG-20

## HARDWARE MOUNTED GATE

### FEATURE & COMPONENTS



**A** x4   **B** x4   **C** x2   **D** x2   **E** x1   **F** x1   **G** x2   **H** x1   **I** x2   **J** x2



### SET-UP

This gate is suitable for openings between 25" and 41½" wide.

If you intend to use this gate to prevent a child from going upstairs, it must be fitted on the very bottom stair. If you wish to use this gate to prevent a child from going downstairs, it must be fitted on the very top stair.

#### Step 1

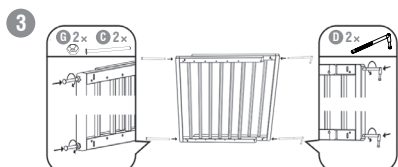
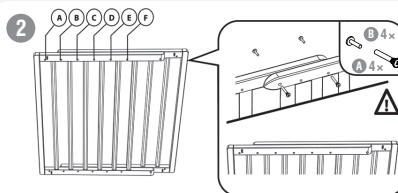
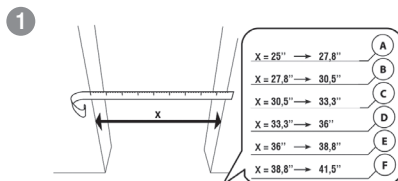
Adjust the two gate sections to one of the six shown positions (A-F), according to the size of the opening you intend to fit the gate in.

#### Step 2

Align the holes on both gate sections. Secure the gate by fastening 2 'B' screws into 2 'A' screws as shown in the diagram. Repeat this for the holes on the bottom of the gate. Do not attempt to fasten the gate using only one screw.

#### Step 3

Screw the opening side spindles 'C' into one side of the gate. Screw the hinge spindles 'D' into the other side of the gate.



# IMPORTANT ! KEEP FOR FUTURE REFERENCE

## Step 4

Fix the lower wall fixing 'F' 3,7" from the floor. Fix the upper wall fixing 'E' 32,8" from the floor. Fix one hinge 'I' 3" from the floor and the other hinge 'I' 31" from the floor. Make sure to use the appropriate fixings for the wall.

## Step 5

Place the gate into position, making sure that both of the hinge spindles 'D' align with the hinges 'I'.

## Step 6

Adjust the opening side spindle 'C' so that they fit comfortably in the wallcups 'E'. Make sure that the wall fixing screws are extended a minimum of 0,8" and a maximum of 2,1". Do the same for the hinge-bars 'D', making sure that they are extended a minimum of 1,1" and a maximum of 2,5".

## Step 7

Press the wall fixing catch and lift the gate, allowing it to open.

## Step 8

Tighten the nuts 'G' on the opening side spindle using the spanner 'H'.

## Step 9

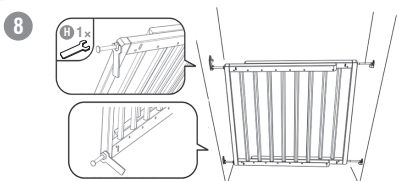
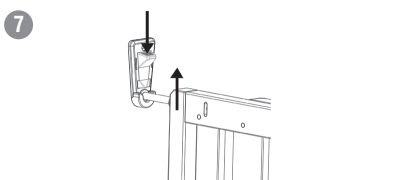
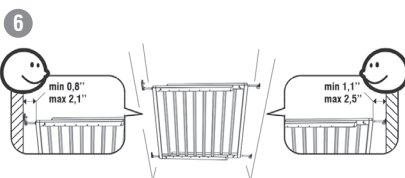
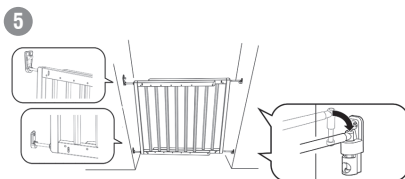
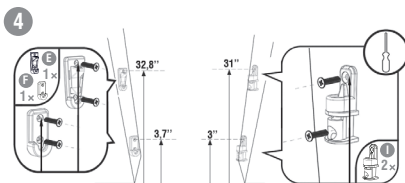
Place the hinge covers 'J' on the hinges 'I'. These can later be removed using a screwdriver.

## Step 10

To allow for uneven flooring or wall surfaces, all four corners can be adjusted individually.

## Step 11

Ensure that once your gate is installed it hangs level and upright.

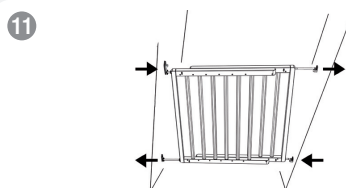
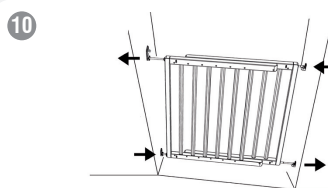
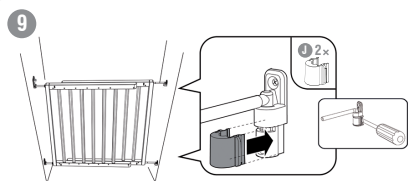


### MAINTENANCE:

1. Regularly check gate, tension bolts and pads to make sure the gate is securely in place.
2. Do not use the gate if any components are damaged or missing.

### To Clean:

Wipe surface with a damp cloth or sponge to clean.



©2011 Oggi

Please retain for future reference.  
Colors and styles may vary.  
Made in Vietnam.