

OGGI SG-26

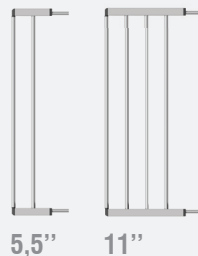
HARDWARE MOUNTED GATE



← 28,7" - 38" →



Extension*



* Sold separately

Please read the following instructions carefully.
Keep this instruction manual for future reference.
Tools required: Wrench (included).

⚠ WARNING:

Keep small parts away from children.
Adult assembly required.
Intended for use with children from 6 months through 24 months.

INSTRUCTION MANUAL

Thank you for purchasing this Safety Gate from Oggi.
This gate will help you create and maintain a secure environment for your child (or pets).

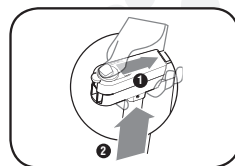
⚠ **WARNING: IMPORTANT! KEEP FOR FUTURE REFERENCE!**

WARNING: To prevent serious injury or death, securely install gate and use according to manufacturer's instructions.

WARNING: Never use with a child able to climb over or dislodge/open the gate.

WARNING: Never leave child unattended.

- Do not use if any components are missing or damaged.
- Always close and lock gate behind you.
- Do not use if any components are missing or damaged.
- Intended for use with children from 6 months through 24 months.
- This product will not necessarily prevent all accidents. Proper adult supervision is required at all times.
- Adult assembly required. Exercise care when unpacking and assembling product.



Oggi . 360 Stewart Road - Wilkes-Barre, PA 18706

OGGI SG-26

HARDWARE MOUNTED GATE

FEATURE & COMPONENTS



A x4



B x4



* **C** x4



D x4



E x1



* screws not provided

SET-UP

This gate is suitable for openings between 28.7" and 38" wide.

Step 1

Attach the wall-cup screws 'A' and the nuts 'B' through the casings 'D' to the four corners of the gate.

Step 2 & 3

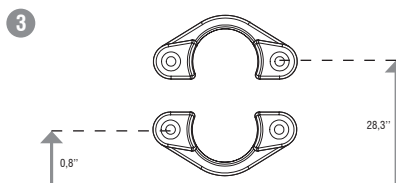
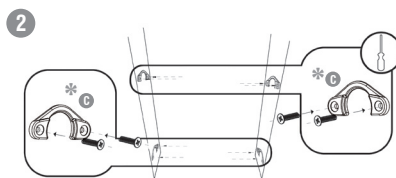
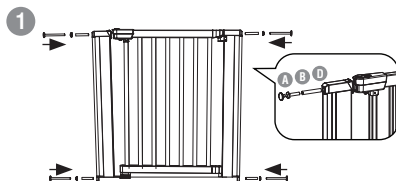
Fix the wall-cups 'C' to the wall surface using the appropriate fixings for the surface. The holes for the lower wall-cups should be 0,8" above the floor while the holes for the upper wall-cups should be 28,3" above the floor. Observe the orientation of the upper and lower wall-cups.

Step 4

Place the gate into position. If the latch is not aligned correctly, adjust the wall-cup screw next to the latch until the latch closes securely.

Step 5

Adjust the wall-cup screws 'A' so that the two vertical supports are at 90° to the bottom horizontal piece. Use a spirit level if necessary. Tighten the nuts 'B' using the spanner 'E'.



IMPORTANT ! KEEP FOR FUTURE REFERENCE

Step 6

The distance between the wall surface and the gate should be no less than 0,5" and no more than 2,5" on both sides.

Step 7

To open the gate, slide the latch away from the wall and lift the gate. The gate should open both ways. The arrows on the top of the latch indicate the direction in which the gate can be opened. Two orange arrows indicate that the gate is locked.

To block the opening direction of the gate switch the small lever (located on the underside of the latch mechanism) towards the gate on the side in which you wish the gate to open.

Extensions

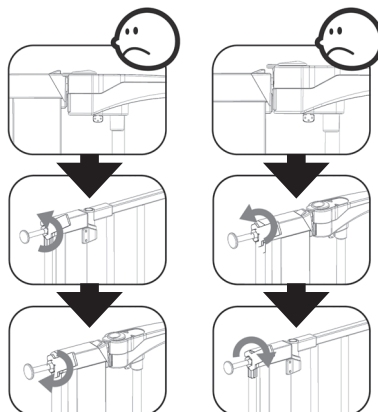
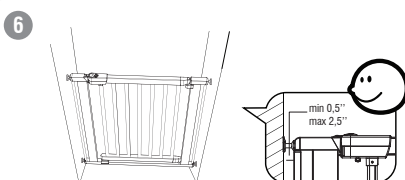
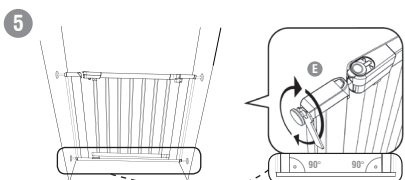
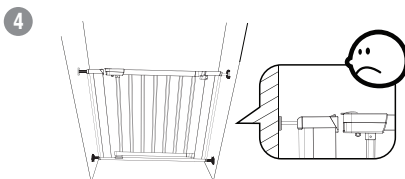
Refer to the table to see which extension(s) are required for the desired opening.

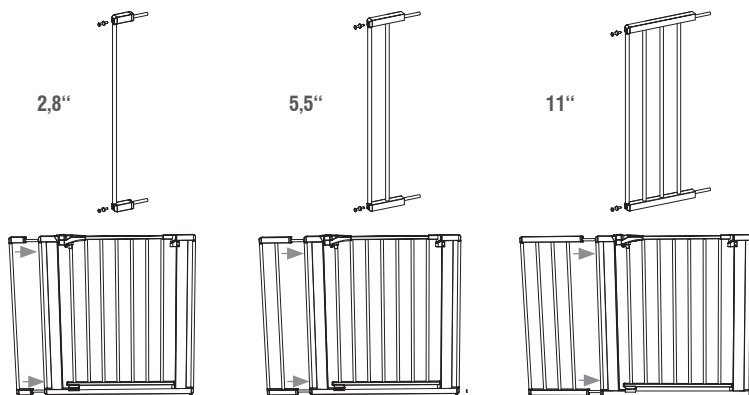
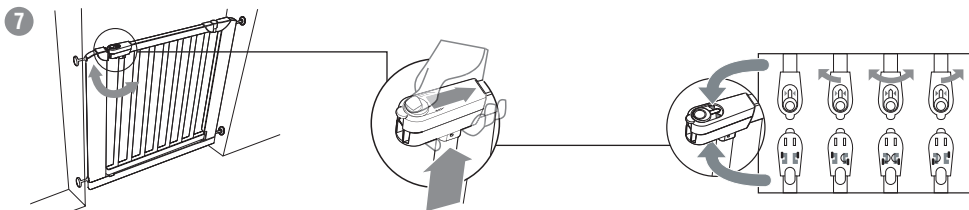
To attach the extensions: Remove the nuts 'B', wall-cup screws 'A' and the casings 'D' on the latch side of the gate. Insert the extension into the frame. Attach the wall-cup screws and nuts to the extension.

Never climb over the gate

The gate is designed for indoor use only

This safety gate will not necessarily prevent all accidents. Never leave children unattended





MAINTENANCE:

1. Regularly check gate, tension bolts and pads to make sure the gate is securely in place.
2. Do not use the gate if any components are damaged or missing.

To Clean:

Wipe surface with a damp cloth or sponge to clean.

©2011 Oggi

Please retain for future reference.
Colors and styles may vary.
Made in Vietnam.